

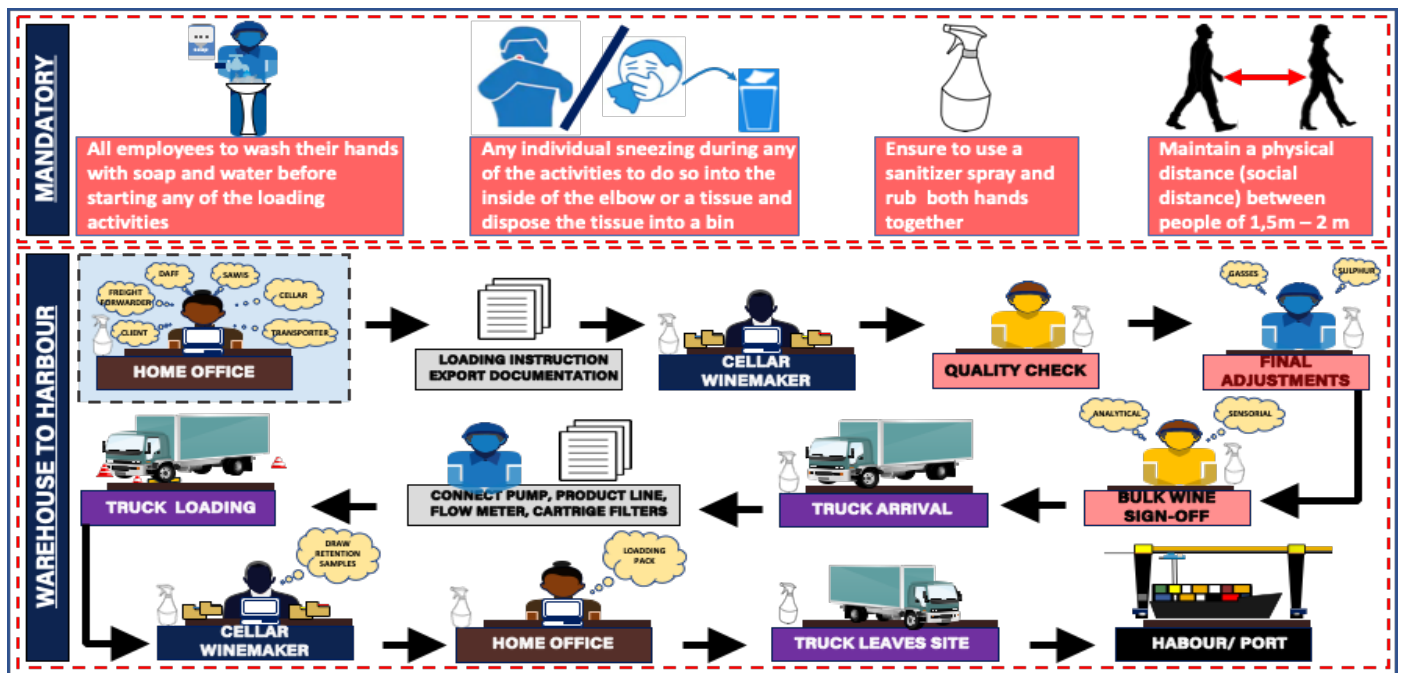


COVID-19 Preventative Measures
SA Wine Export Loading Procedure
ANNEXURE D (Bulk)

31 MARCH 2020

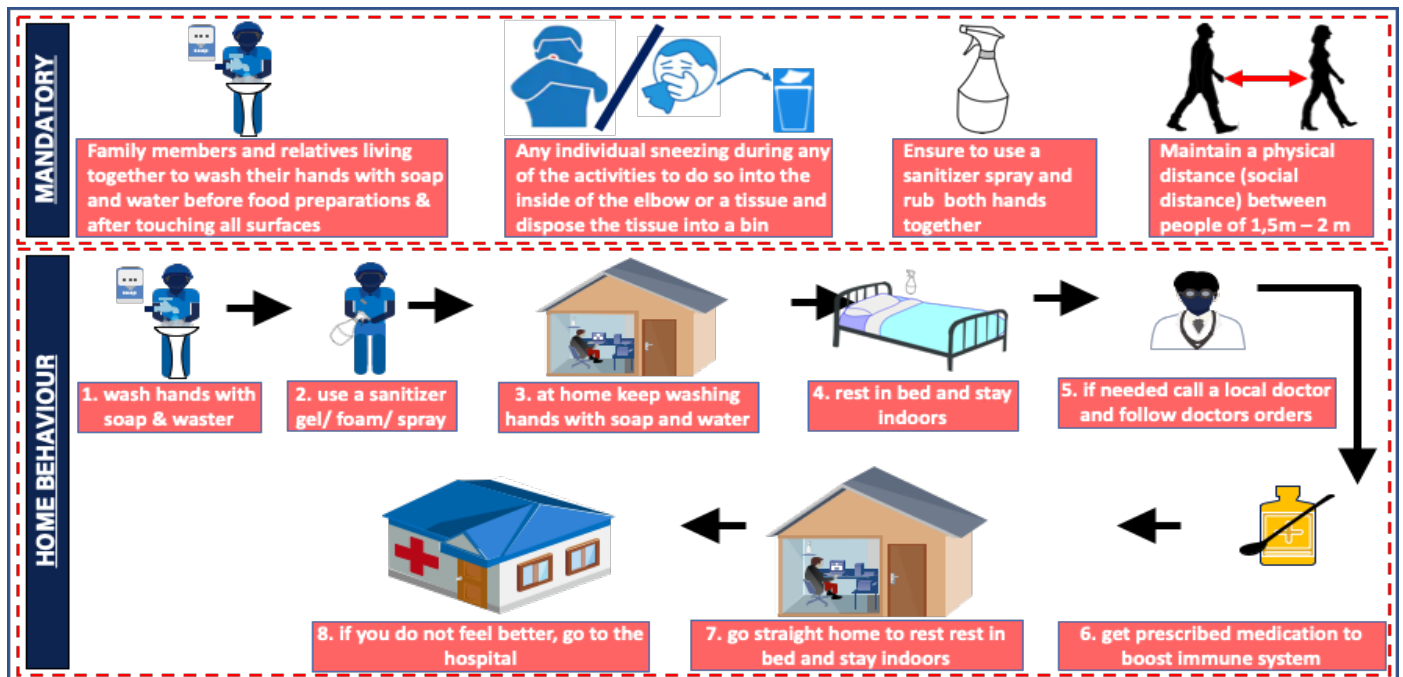
**BULK LOADING PROCEDURE:
CELLAR TO HARBOUR**

COVID-19 Preventative Measures | SA Wine Export Loading Procedure



The steps above illustrate the activities that take place during Cellar bulk loading from wine site’s cellar to the harbour. This wine is bottle ready and only requires minimum adjustments (Gasses and Sulphur). A minimum of 2 staff members are needed to load and perform administration related skills.

COVID-19 Preventative Measures | Home and community



The steps above illustrate the activities that take place when our team members and staffers are at home. This is to ensure that the good practices learnt at the place of wine (the wine site) can be implemented, practiced at home to further eliminate the coronavirus exposure in our communities.